



2, 2½ & 3 BHK Luxury Apartments @ Baner



Reelicon  
**Alpine** Ridge  
Fresh air ~ Hillside homes...

A S P I R A T I O N S



Reelicon  
Alpine Ridge

A S P I R A T I O N S

A lifestyle luxury location, Alpine Ridge is a realization of all your aspirations with dollops of convenience. With its close proximity to IT parks, recreational hubs, educational institutes, prestigious schools, hospitals and health clinics, Alpine ridge promises everyday to be a soiree. Dine and shop in the chic neighboring city centers, or head to the exclusive restaurants for a fabulous night that you wont forget. And when the day is through, retreat home to find leisure and comfort that is sure to stir your soul.



F R E S H B R E E Z E



Reelicon  
Alpine Ridge

## F R E S H B R E E Z E

Nestled in the nature, along a hillside in Baner, Alpine ridge is a home, beautifully integrated into its surroundings, matched in spaciousness and a sense of being. A place where you can relax, letting your soul fill with the abundant natural beauty that surrounds you. Look around and absorb the mood.

Fresh crisp breeze, the morning sun slanting across the hill, huge fluffy clouds hanging low, trees rustling with leaves floating to the ground, birds twittering and butterflies fluttering. The aroma of vibrant flowers mixed with the morning dew... such magnificence for an unruffled, composed and a peaceful living.





Reelicon  
Alpine Ridge

## B L U E   S K I E S

On the outside, pander to the magnificent beauty of this towering building with a well spread layout and ample space to maneuver around. Spacious balconies and terraces open to the clear blue skies offering spectacular views in all directions. On the inside, wait till you see redefined style and elegance. Tall doors and windows provide an abundance of natural light and spacious living, capturing views of the stunning hills undisturbed and never-ending. Spend your weekends entertaining your loved ones, or just relaxing in the well manicured lawns reading a favorite book, or catching up with fiends. Leave your worries behind, reflect and focus on you for a change. Embrace a new pace.





Reelicon  
Alpine Ridge

A lifetime is an endless collection of moments, some more memorable than others. Alpine Ridge comprises of two spectacular towers with a stunning open-concept space that provides privacy where you need it, as well as allowing you to appreciate all its impeccable and thoughtful detail. Enjoy this sophisticated style that characterizes this gorgeous home, with an abundance of natural light, spacious living - offering an array of modern amenities that act as a canvas for your modern lifestyle. The tall windows allow you to see right through the minimalist interiors to appreciate the view from any room, unobstructed and unforgettable. Find that moment where life is exactly as it should be, embrace this exciting lifestyle at Alpine Ridge for a paradise far away from the everyday.



WELL PLANNED PROJECT LAYOUT



Amenity Space

A

B

C

D

Lawn

Club House

Swimming Pool



R  
E  
F  
R  
E  
S  
H



## A M E N I T I E S

- Elegant compound wall with lush green plantation along the periphery
- Grand entrance gate with security cabin
- Decorative entrance lobby
- Club house with state of art gymnasium with steam bath and sauna bath
- Swimming pool
- Well equipped children play area
- Party lawn
- Community hall
- Fire fighting system
- Gas Pipeline facility
- Garbage chute
- Generator back-up for entire flat (excluding power points)
- Concrete / paved internal road
- Video door phone
- Ample Car parking space

**Eco friendly features**

- Vermi culture plant
- Rain water harvesting
- Solar water system





## S P E C I F I C A T I O N S

### RCC

- Earthquake resistant framed structure

### Brickwork

- Internal and External 6" thick eco friendly bricks

### Plaster

- External Sand faced
- Internal: Neeru/ gypsum finish

### Painting

- Durable Ace paint for external walls
- OBD paint for internal walls

### Flooring

- Laminated wooden flooring for master bedroom
- 800 x 800 Vetrified tiles for other rooms.
- Anti-skid flooring for bathrooms and terraces

### Doors

- Door frame with door panel
- Main door both side veneer finished
- Internal doors one side veneer finished
- 2/3 track powder coated aluminum sliding door for terrace.

### Windows

- 2/3 Track powder coated aluminum windows with mosquito net
- Attractive oil painted safety grills
- Granite sill frame for all windows

### Kitchen

- Granite kitchen platform & service counter with stainless steel sink
- Designer tiles up to lintel level
- Provision for Aqua guard point in kitchen
- Piped gas facility
- Gas leak detector
- Dry balcony with provision for washing machine.

### Designer Bathrooms

- Jaquar C P fittings
- Glass cabin partition to separate the wet and dry areas
- Wall hung European commodes in all toilets.
- Designer wall tiles up to lintel level
- Designer wash basin counters.
- Decorative granite door frames
- Provision for Geyser in all bathrooms

### Elevators

- Two automatic elevators with generator back up for each wing

### Electrification

- 3 phase connection in all apartments
- Concealed copper wiring with circuit breaker (MCB)
- Legrand modular switches
- TV, telephone & broadband point in living and master bedrooms
- Provision for AC point in living room and master bedroom
- Exhaust fans in all toilets and kitchen



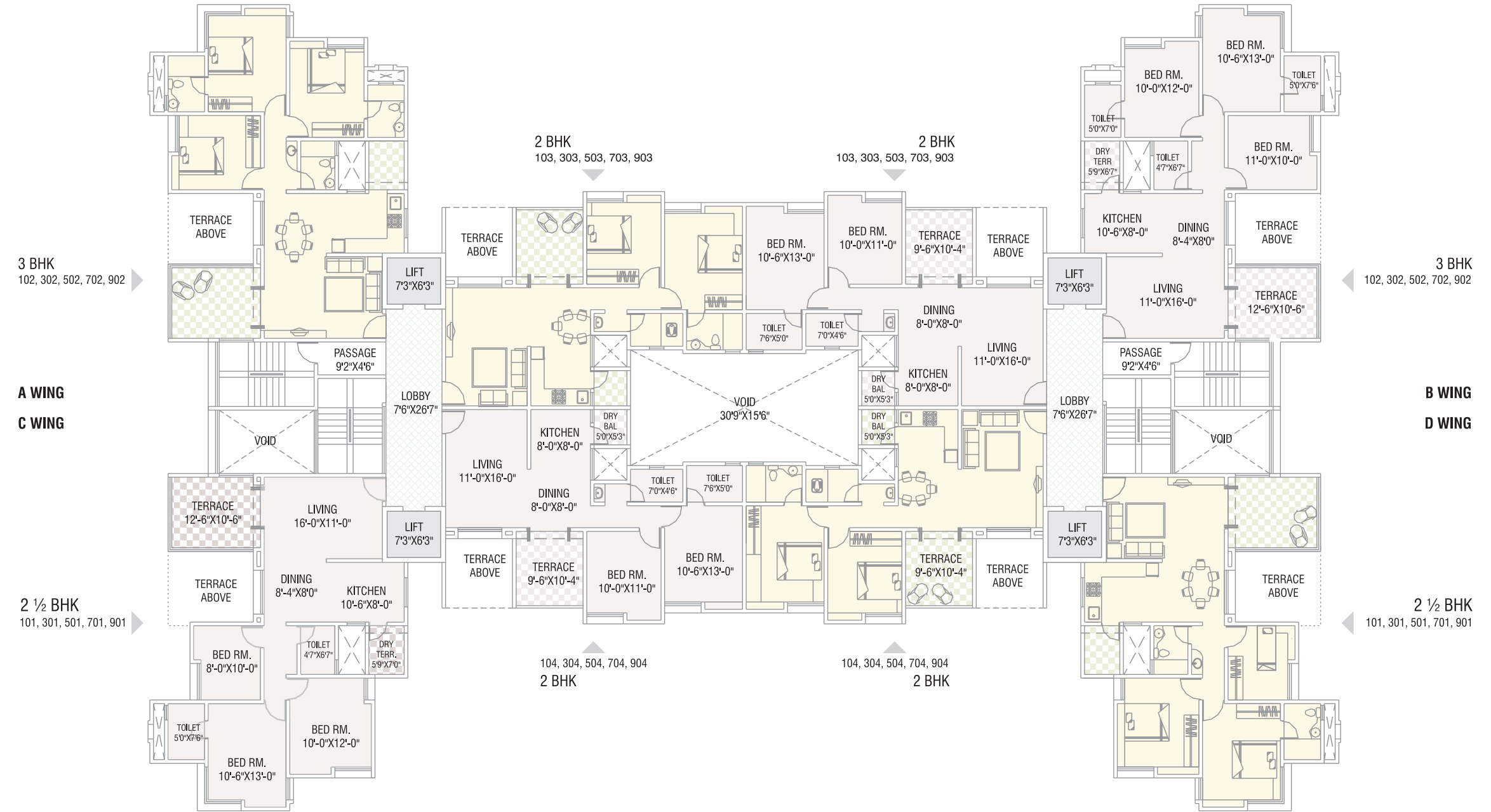


2 BHK  
LAYOUT



3 BHK  
LAYOUT

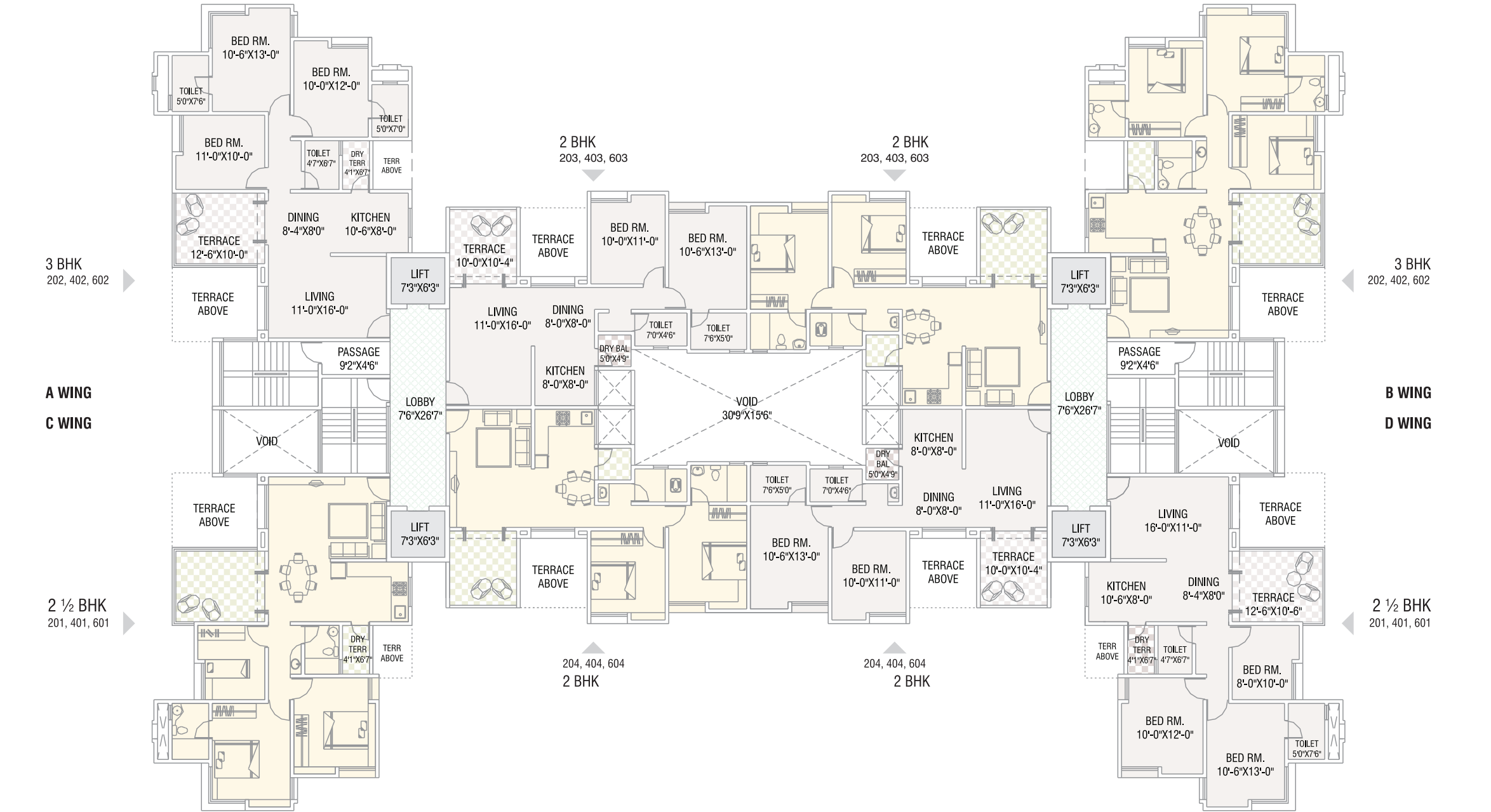
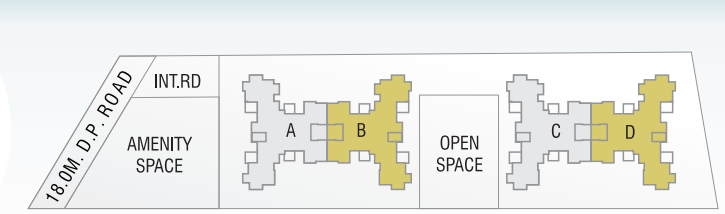
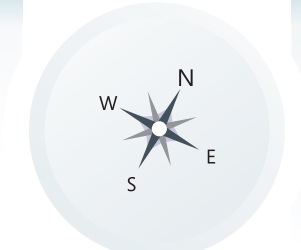




1st, 3rd, 5th, 7th, 9th FLOOR PLAN

**AREA STATEMENT (sq. ft.)**

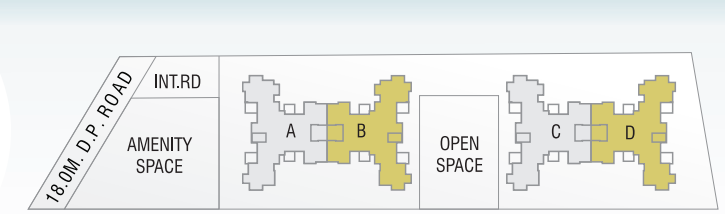
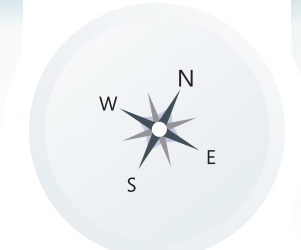
Flat No.	Flat Type	Carpet	Terrace	Total Area
101, 301, 501, 701, 901	2½ BHK	811.00	167.00	1272.00
102, 302, 502, 702, 902	3 BHK	867.00	165.00	1342.00
103, 303, 503, 703, 903	2 BHK	682.00	124.00	1048.00
104, 304, 504, 704, 904	2 BHK	682.00	124.00	1048.00

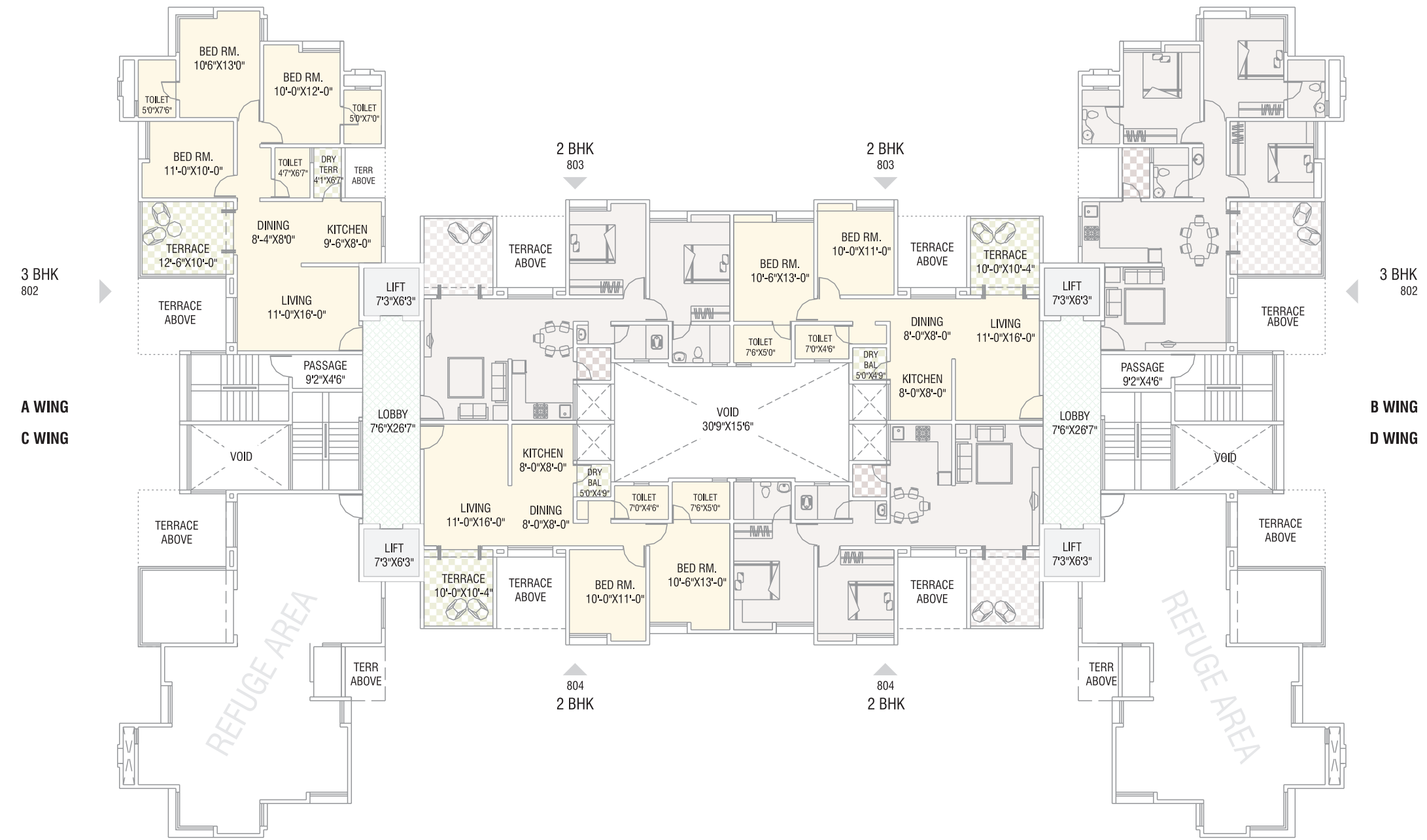


2nd, 4th, 6th, FLOOR PLAN

**AREA STATEMENT (sq. ft.)**

Flat No.	Flat Type	Carpet	Terrace	Total Area
201, 401, 601	2½ BHK	811.00	153.00	1253.00
202, 402, 602	3 BHK	867.00	152.00	1325.00
203, 403, 603	2 BHK	682.00	124.00	1048.00
204, 404, 604	2 BHK	682.00	124.00	1048.00

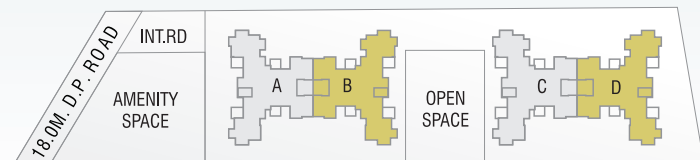
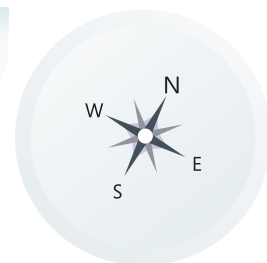




8th, FLOOR PLAN

AREA STATEMENT (sq. ft.)

Flat No.	Flat Type	Carpet	Terrace	Total Area
802	3BHK	867.00	152.00	1325.00
803	2 BHK	682.00	124.00	1048.00
804	2 BHK	682.00	124.00	1048.00





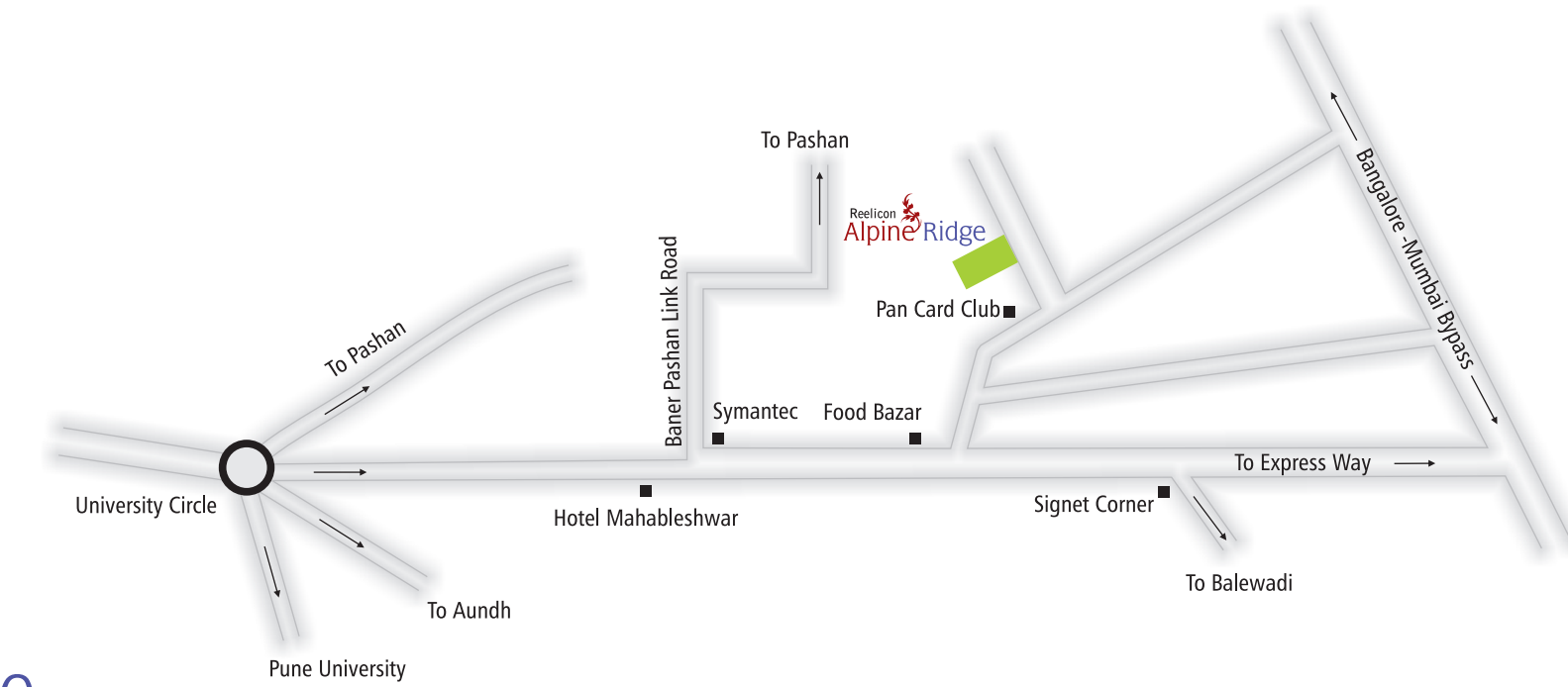
Credits :

**Architects:**  
Base Architects, Aniruddha Shinde,  
Tel: 020 25531003

**RCC:**  
Sunil Mutalik & Associate  
Tel: 020 24476705

**Landscape Architect:**  
Eco Inscape,  
Tel: 080 41259859

**Legal Adviser**  
S. V. Kolse Patil,  
Tel: 020 25535225



SITE ADDRESS : Sr. No. 13/1/4 +5, Near Pancard Club, Baner, Pune - 411045



For sales enquiry contact : +91 99227 99777 / Email: reeliconshelters@gmail.com

[www.reelicon.org](http://www.reelicon.org)

A Project by



Reelicon Shelters Pvt. Ltd. 301, Western Court, Opp. E Square Multiplex, 1082, Ganeshkhind Road, Shivaji Nagar, Pune 411016 Telefax: 91 20 2565 9348 / 49

Note : The images and material contained in the Brochure are conceptual illustrations. Only the Actual Agreement (to be entered into between the flat purchaser and the developers), shall be binding on the Parties and the actual layouts, and specifications of the individual flat and any amenities to be provided, stated therein shall be final and conclusive of the agreed terms, offered to the Purchaser by the Developer. The Developer reserves all rights to make alterations, modifications, and changes in the sanctioned plan, lay out specification, flats/units, elevations, designs, and amenities that will be made available in the project.